



NPD6-200Ah

Valve-regulated lead-acid battery



DEEP CYCLE SERIES

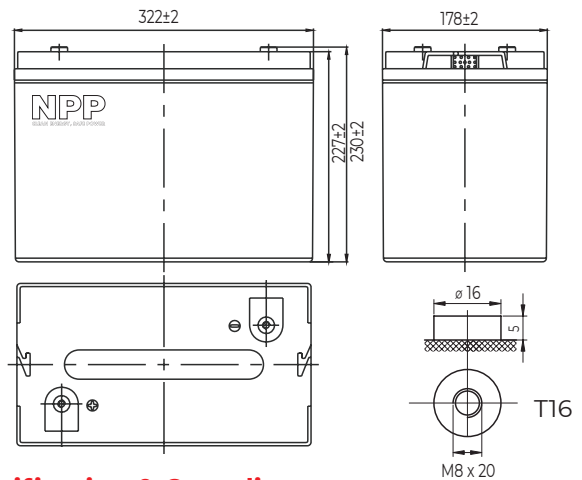
Characteristics

Nominal voltage	6V (3 cell per unit)	
Nominal capacity at 10 hours rate/5.4V (25°C)	206Ah	
Capacity (25°C)	20 Hours rate/5.4V	218Ah
	5 Hours rate/5.4V	176Ah
Terminal type	T16	
Torque	12.3±2.5N.m	
Approx. internal resistance (25°C)	1.8 mΩ	
Dimensions	Length	322±2mm (12.68inch)
	Width	178±2mm (7.01inch)
	Height	227±2mm (8.94inch)
	Total height	230±2mm (9.06inch)
Design Life (stand-by)	JIS at 25°C	10 years
	Eurobat at 20°C	10-12 years
Weight	30.50kg (67.20lbs)±3%	
Nominal operating temperature	25°C±3 (77±5°F)	
Operating temperature range	Discharge	-15°C~50°C (5°F~122°F)
	Charge	-10°C~50°C (14°F~122°F)
	Storage	-20°C~50°C (-4°F~122°F)
Float charging voltage at 25°C	6.75V~6.90V	
Cyclic charging voltage at 25°C	7.25V~7.50V	
Temperature compensation	Float use	-9 mV/°C/Block
	Cycle use	-15 mV/°C/Block
Max. charging current (A)	60.0A	
Max. discharge current for 5 seconds	1400A	
Self discharge rate (25°C)	≤3%/month	
Battery container ABS UL94-HB	V-0 optional	

Overview

NPP Power Deep Cycle Series are manufactured specifically to provide outstanding performance in deep cycling applications. The batteries are designed using enhanced alloy contents plates and active paste materials.

Dimensions & Terminal Type (mm)



Certification & Compliances



Compliant to: EUROBAT, RoHS, WEEE's and Reach.
Manufactured according to IEC 60896-21 / 22

Construction

Component	Positive Plate	Negative plate	Container	Separator	Electrolyte	Safety valve	Terminal
Raw material	Lead dioxide	Lead	ABS (V-0 opt.)	AGM	Sulfuric Acid	Rubber	Copper

Constant current discharge characteristics at 25°C

(Ampere/battery)

F.V/Time	10min	15min	30min	60min	2hr	3hr	4hr	5hr	8hr	10hr	20hr
4.80V	449	346	207	127	75.3	54.2	43.3	37.0	25.4	21.0	11.1
4.95V	436	338	203	125	74.8	53.9	43.0	36.8	25.3	20.9	11.1
5.10V	418	325	197	122	74.2	53.5	42.7	36.5	25.1	20.9	11.1
5.25V	400	314	192	118	73.0	53.1	42.4	36.3	24.9	20.7	11.0
5.40V	377	298	185	115	71.2	51.6	41.2	35.2	24.2	20.6	10.9

Constant power discharge characteristics at 25°C

(Watts/battery)

F.V/Time	10min	15min	30min	60min	2hr	3hr	4hr	5hr	8hr	10hr	20hr
4.80V	2425	1900	1161	726	436	319	255	219	151	125	66.7
4.95V	2352	1854	1138	715	433	317	253	217	150	125	66.6
5.10V	2255	1786	1103	697	429	315	251	216	149	125	66.4
5.25V	2158	1725	1077	675	423	313	250	214	148	124	66.0
5.40V	2037	1634	1037	653	412	303	242	208	144	123	65.5

The above characteristics represent average values and can be obtained within three charge and discharge cycles. The batteries must be fully charged before testing. The data in this document is subject to change without notice and become contractual only after written confirmation. Please contact NPP Power for the latest available version.

NPP Power (Vietnam) Co.,Ltd

Lot A22.3, Road C4, Thanh Thanh Cong Industrial Zone,
An Hoa Village, Trang Bang District, Tay Ninh Province,
Vietnam

Guangzhou NPP Power Co, Ltd.

No.67 Lianglong Road, Huashan Town, Huadu District,
Guangzhou, China
Email: info@nppower.com.cn Tel. +86 20 37887 390